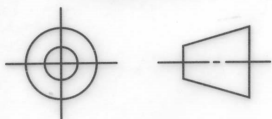




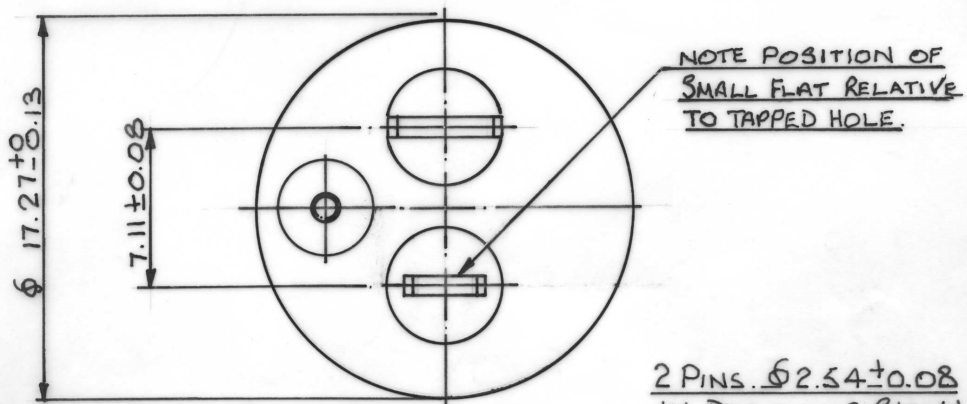
# SUFFOLK GLASS ASSOCIATES CO. LTD.

SHIRE HILL, SAFFRON WALDEN, ESSEX CB11 3AQ Tel: 0799 527264 • Fax: 0799 528066

## PROJECTION

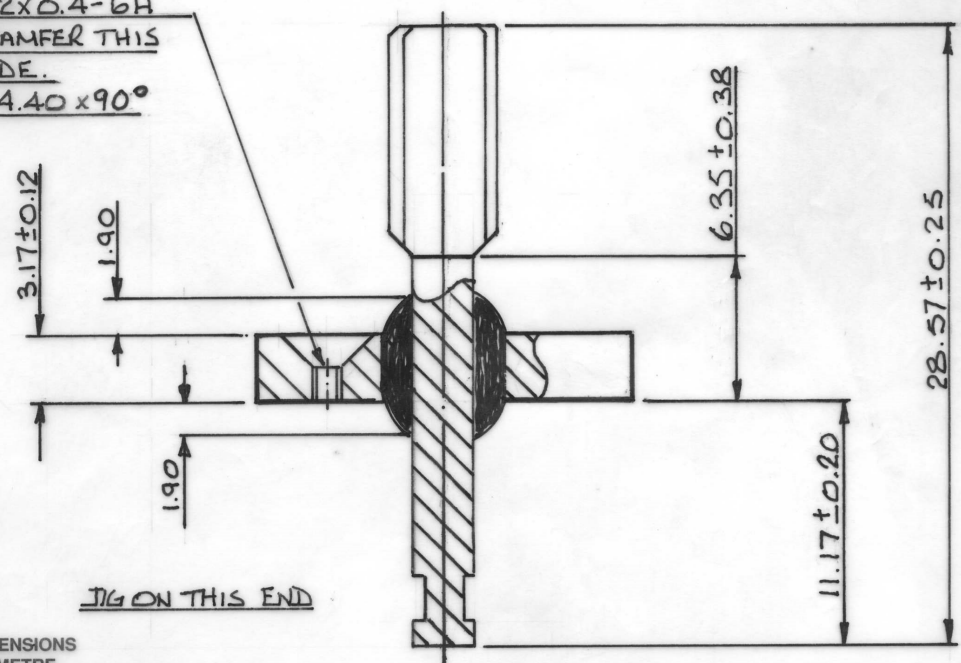


ISS.	CHANGE	DATE
1	TIN LEAD THICKNES WHAT 5 MICRONS MAX.	29/11/92 DR
2	PIN LENGTH DIMENSIONS NOW IN LINE WITH COST DRY	12/02/93 7442 DR



2 PINS.  $\phi 2.54 \pm 0.08$   
IN POSITIONS SHOWN.

NOTE. \*  
M2x0.4-6H  
CHAMFER THIS  
SIDE.  
 $\phi 4.40 \times 90^\circ$



ALL DIMENSIONS  
IN MILLIMETRE

FINAL FINISH. 3 MICRONS COPPER. 5 MICRONS 60/40 ELECTRO TIN LEAD MAXIMUM.	TOLERANCE UNLESS OTHERWISE STATED	DRAWN BY	DATE	DRAWING NO.	ISSUE
	$\pm 0.15$	A. FORD	26.11.92	S.302	3