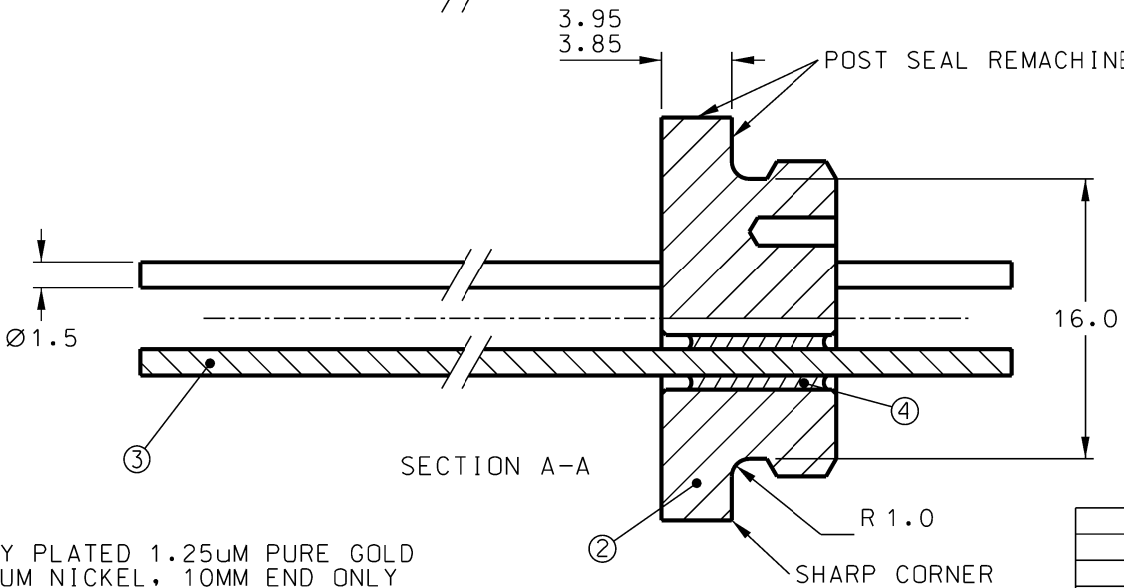
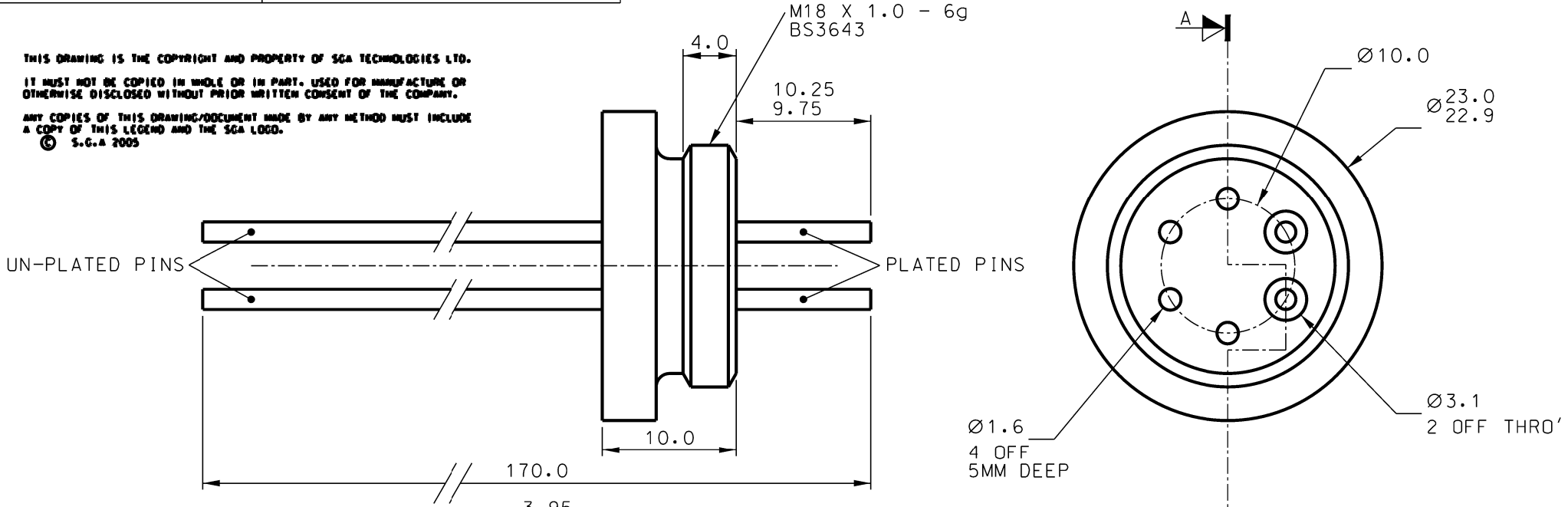


THIS DRAWING IS THE COPYRIGHT AND PROPERTY OF SGA TECHNOLOGIES LTD.
IT MUST NOT BE COPIED IN WHOLE OR IN PART. USED FOR MANUFACTURE OR OTHERWISE DISCLOSED WITHOUT PRIOR WRITTEN CONSENT OF THE COMPANY.
ANY COPIES OF THIS DRAWING/DOCUMENT MADE BY ANY METHOD MUST INCLUDE A COPY OF THIS LEGEND AND THE SGA LOGO.
© S.G.A 2005



PLATING
PINS ONLY PLATED 1.25UM PURE GOLD OVER 4-7UM NICKEL, 10MM END ONLY

- NOTES
- 1) POST SEAL MACHINING
 - A) REMACHINE 22.9/23.0MM DIAMETER
 - B) REMACHINE 3.85/3.95MM ONLY ON FACE SHOWN
 - C) CORNER BETWEEN TWO REMACHINED FACES MUST BE SHARP NO DEBURRING OR RADIUS ALLOWED
 - D) ENTIRE REMACHINED FACES TO BE CUT, NO UNMACHINED AREAS ALLOWED.
 - E) NO DAMAGE ALLOWED TO ANY OTHER PART OF THE SEAL INCLUDING PINS

4	SE2180A	GLASS	COMPRESSION TYPE	2
3	SP2180A	PIN	HASTELLOY C-276	2
2	SF2180A	FERRULE	HASTELLOY C-22	1
1		GLASS/METAL SEAL		A
PART #	DRG N°	DESCRIPTION	MATERIAL	QTY


ISSUE	1	DCN	
		DRAWN	
		DATE	
	2	DCN	
	DRAWN	Nigel Webb	
	DATE	12/10/05	
ISSUE 2: PIN DIAMETER STATED, PLATING PINS ONE END ONLY			

THE FOLLOWING TOLERANCES APPLY TO ALL DIMENSIONS EXCEPT WHERE STATED

±0.1

©2005 S.G.A. 01799 527264

DRAWN	DATE
Nigel Webb	07/10/05
APPROVED	DATE
ALL DIMENSIONS IN MILLIMETRES UNLESS OTHERWISE STATED	
DO NOT SCALE	



SGA technologies
enquiries@sgatech.co.uk

THIRD ANGLE PROJECTION

DRG. No. **S2180A**