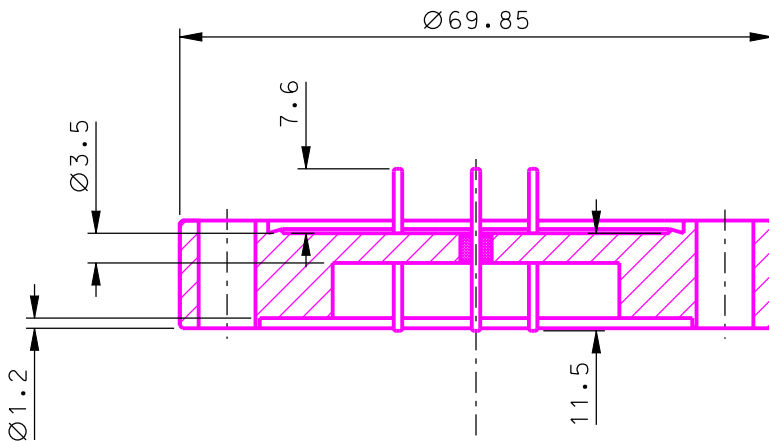
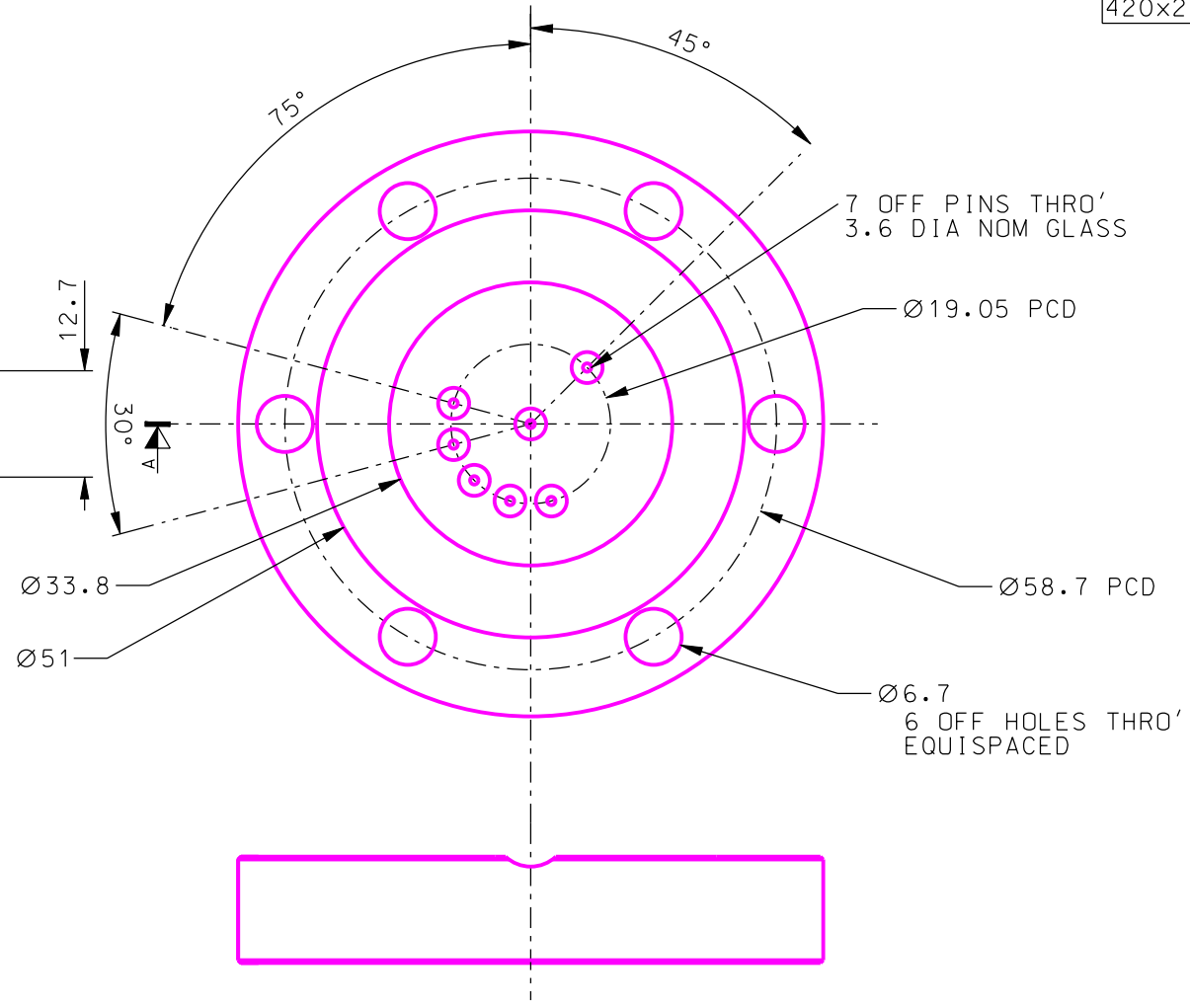


VACUUM SIDE (DO NOT PLATE PINS)



AIR SIDE (PLATE PINS)



FERRULE: SS POLISH
PINS: 0.25µm TYP AU OVER Ni AIR SIDE ONLY

THIS DRAWING IS THE COPYRIGHT AND PROPERTY OF SGA TECHNOLOGIES LTD.
IT MUST NOT BE COPIED IN WHOLE OR IN PART, USED FOR MANUFACTURE OR OTHERWISE DISCLOSED WITHOUT PRIOR WRITTEN CONSENT OF THE COMPANY.
ANY COPIES OF THIS DRAWING/DOCUMENT MADE BY ANY METHOD MUST INCLUDE A COPY OF THIS LEGEND AND THE SGA LOGO.
© S.G.A 2008

4	SE1841	GLASS PREFORM	SO5	7
3	SP2628	PIN	NILO48	7
2	SA2628	FERRULE	STAINLESS STEEL	1
1		FLANGE ASSY.		A
PART	DRG. No.	DESCRIPTION	MATERIAL	QTY

[APA: 182mm²]

ISSUE	2	DCN	8591
		DRAWN	C.I.BROWN
		DATE	29/8/12
GLASS WAS 2.8 NOM PINS WERE PLATED BOTH SIDES			

THE FOLLOWING TOLERANCES APPLY TO ALL DIMENSIONS EXCEPT WHERE STATED

±0.1

©2008 S.G.A. 01799 527264

DRAWN DATE
C.I.BROWN 6/5/08
APPROVED DATE

ALL DIMENSIONS IN MILLIMETRES UNLESS OTHERWISE STATED

DO NOT SCALE

SGA technologies
enquiries@sgatech.co.uk

THIRD ANGLE PROJECTION DRG. No. **S2628**