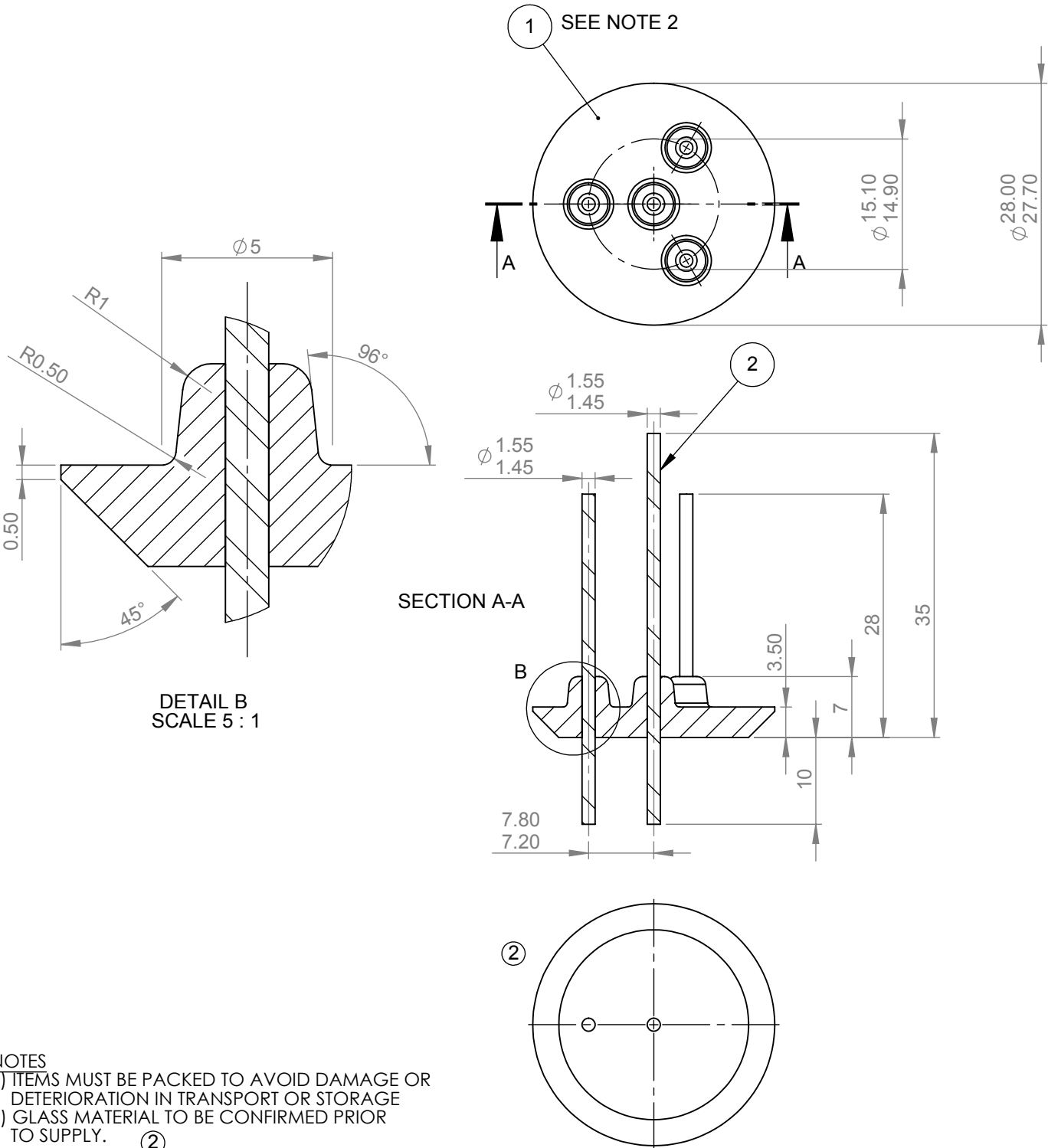




ITEM NO.	DESCRIPTION	MATERIAL	QTY.
1	GLASS PREFORM	VETRO SCHOTT 8250 / CORNING 7056	1
2	Contact Pin	KOVAR	4

REVISIONS			
REV.	REVISED BY	DATE	DCN NO
1	P ADAMS	25/01/2010	xxxx
2	P ADAMS	10/02/2010	8280



MATERIAL: SEE BOM  
 BASED ON M.H100.0001.02R.0 ②

PROPRIETARY AND CONFIDENTIAL		UNLESS OTHERWISE SPECIFIED	DO NOT SCALE DRAWING	
THE INFORMATION CONTAINED IN THIS DRAWING IS THE SOLE PROPERTY OF <b>S.G.A TECHNOLOGIES LTD.</b> ANY REPRODUCTION IN PART OR AS A WHOLE WITHOUT WRITTEN PERMISSION OF <b>S.G.A TECHNOLOGIES LTD</b> IS PROHIBITED. ANY COPIES OF THIS DRAWING MADE BY ANY METHOD MUST INCLUDE A COPY OF THIS LEGEND AND THE <b>S.G.A</b> LOGO.		DIMENSIONS ARE IN MILLIMETERS TOLERANCES: LINEAR: $\pm 0.1$ ANGULAR: $\pm 0.5^\circ$ SURFACE FINISH: 1.6 ✓	 <b>SGA technologies</b> enquiries@sgatech.co.uk	
 <b>THIRD ANGLE PROJECTION</b>		REMOVE ALL BURRS AND SHARP EDGES INTERNAL/EXTERNAL CHAMFER 0.1 x 45° MAX OR RADIUS R0.1 MAX FINISH: SEE NOTES		
<b>DRAWING STANDARD</b> THIS DRAWING COMPLIES TO BS EN ISO 1101:2005		NAME: P ADAMS DATE: 25/01/2010 APPV'D: P STRONG DATE: 25/01/2010	SIZE: <b>A4</b> DWG NO.: <b>S2888A</b>	Location: \\Sgas1\cadfiles\seals\S2800-S2899\S2888A_2 WEIGHT: 3.98 g SCALE: 1.5:1 SHEET 1 OF 1