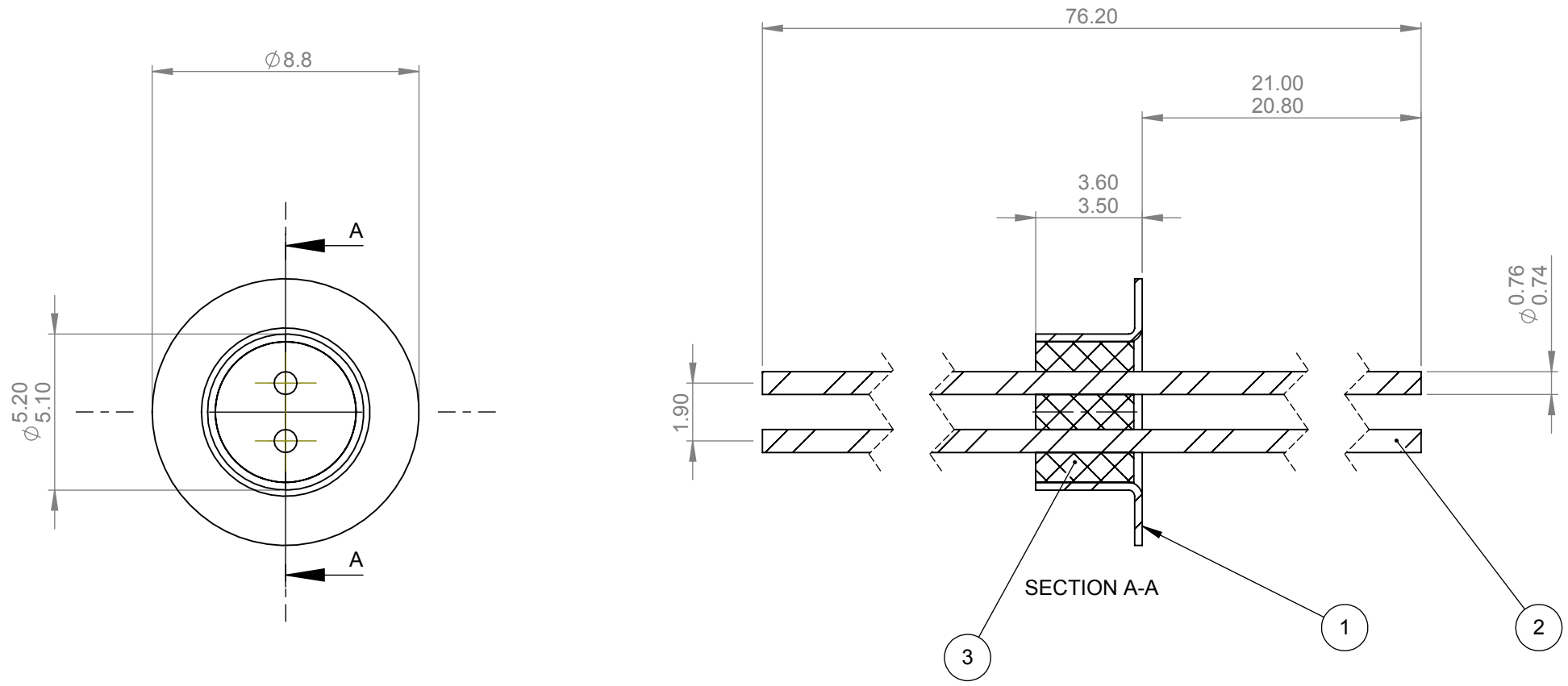


| ITEM NO. | Dwg No | DESCRIPTION | MATERIAL | QTY. |
|----------|---------|---------------|-----------|------|
| 1 | SF2463 | FERRULE | Kovar | 1 |
| 2 | SP2463 | PIN | Kovar | 2 |
| 3 | SE2917A | GLASS PREFORM | M E Glass | 1 |

| REVISIONS | | | |
|-----------|------------|------------|--------|
| REV. | REVISED BY | DATE | DCN NO |
| 1 | P ADAMS | 29/03/2010 | xxxx |
| 2 | C BROWN | 23/9/2010 | XXX |

REVISION 2: PART 2 ADDED



PART 1:
1.27µm MIN Au OVER 2.0 - 4.0µm ELECTROLESS Ni
APA: 191MM2
PART 2:
SS POLISH AND CLEAN

DO NOT SCALE DRAWING



enquiries@sgatech.co.uk

PROPRIETARY AND CONFIDENTIAL

THE INFORMATION CONTAINED IN THIS DRAWING IS THE SOLE PROPERTY OF **S.G.A TECHNOLOGIES LTD.** ANY REPRODUCTION IN PART OR AS A WHOLE WITHOUT WRITTEN PERMISSION OF **S.G.A TECHNOLOGIES LTD** IS PROHIBITED. ANY COPIES OF THIS DRAWING MADE BY ANY METHOD MUST INCLUDE A COPY OF THIS LEGEND AND THE **S.G.A** LOGO.

DRAWING STANDARD: THIS DRAWING COMPLIES TO BS EN ISO 1101:2005

UNLESS OTHERWISE SPECIFIED

DIMENSIONS ARE IN MILLIMETERS
TOLERANCES:-
LINEAR: ± 0.1
ANGULAR: ± 0.5°

SURFACE FINISH: 1.6

REMOVE ALL BURRS AND SHARP EDGES
INTERNAL/EXTERNAL CHAMFER 0.1 x 45° MAX
OR RADIUS R0.1 MAX

FINISH: SEE NOTES

THIRD ANGLE PROJECTION

| NAME | DATE |
|---------|------------|
| P ADAMS | 29/03/2010 |
| xxxx | xx/xx/xxxx |

| | |
|---|----------------|
| TITLE: 2 PIN FEEDTHROUGH | |
| SIZE: A4 | DWG NO. S2917A |
| Location: E:\seals\s2900-s2999\S2917A_2 | |
| WEIGHT: 0.89 g | SCALE: 5:1 |
| SHEET 1 OF 1 | |