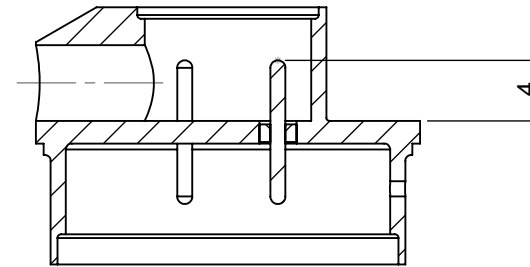
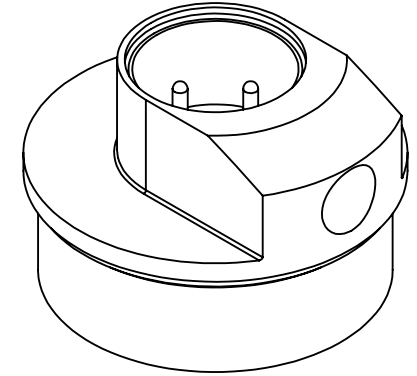
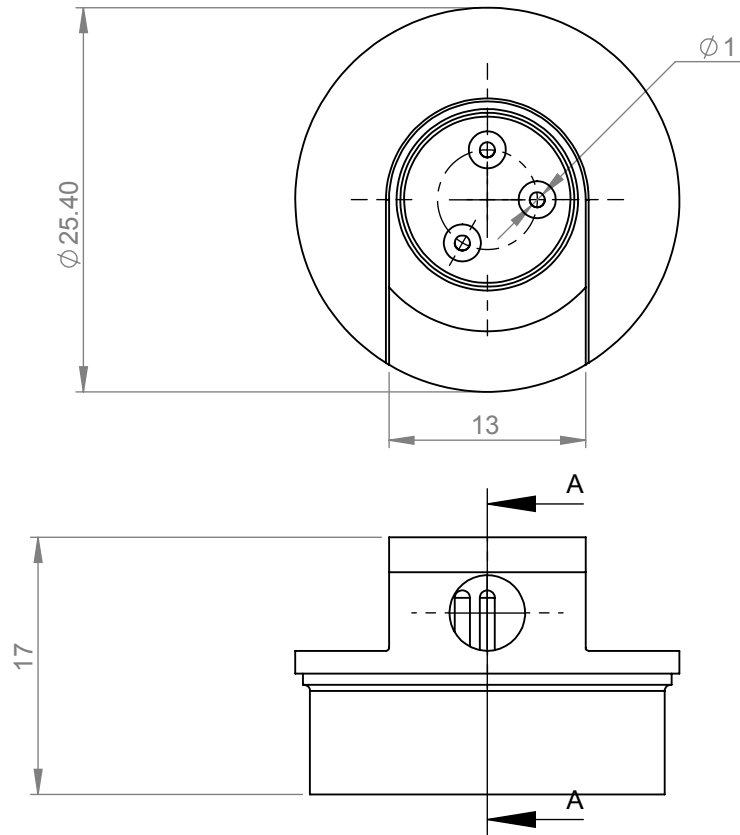


ITEM NO.	Dwg No	DESCRIPTION	MATERIAL	QTY.
1	SF2968A	FERRULE	Ti-6Al-4V (TA11)	1
2	SP2968A	PIN	Kovar	3
3	SE2968A	GLASS PREFORM	Compression Glass	3

REVISIONS			
REV.	REVISED BY	DATE	DCN NO
1	P ADAMS	16/05/2011	xxxx



SECTION A-A

FINISH NOTES:
BODY & PINS: AS FURNACED

DO NOT SCALE DRAWING



PROPRIETARY AND CONFIDENTIAL

THE INFORMATION CONTAINED IN THIS DRAWING IS THE SOLE PROPERTY OF **S.G.A TECHNOLOGIES LTD.** ANY REPRODUCTION IN PART OR AS A WHOLE WITHOUT WRITTEN PERMISSION OF **S.G.A TECHNOLOGIES LTD** IS PROHIBITED. ANY COPIES OF THIS DRAWING MADE BY ANY METHOD MUST INCLUDE A COPY OF THIS LEGEND AND THE **S.G.A** LOGO.

DRAWING STANDARD: THIS DRAWING COMPLIES TO BS EN ISO 1101:2005

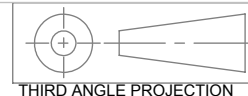
UNLESS OTHERWISE SPECIFIED

DIMENSIONS ARE IN MILLIMETERS
TOLERANCES:-
LINEAR: ± 0.1
ANGULAR: $\pm 0.5^\circ$

SURFACE FINISH: $\sqrt{1.6}$

REMOVE ALL BURRS AND SHARP EDGES
INTERNAL/EXTERNAL CHAMFER $0.1 \times 45^\circ$ MAX
OR RADIUS R0.1 MAX

FINISH: SEE NOTES



THIRD ANGLE PROJECTION	
NAME	DATE
DRAWN P ADAMS	16/05/2011
APPV'D xxx	xx/xx/xxxx

TITLE: Completed Seal	
SIZE: A4	DWG NO. S2968A
Location: \\Sgas1\cadfiles\seals\s2900-s2999\S2968A_1	
WEIGHT: 9.10 g	SCALE: 2:1
SHEET 1 OF 1	