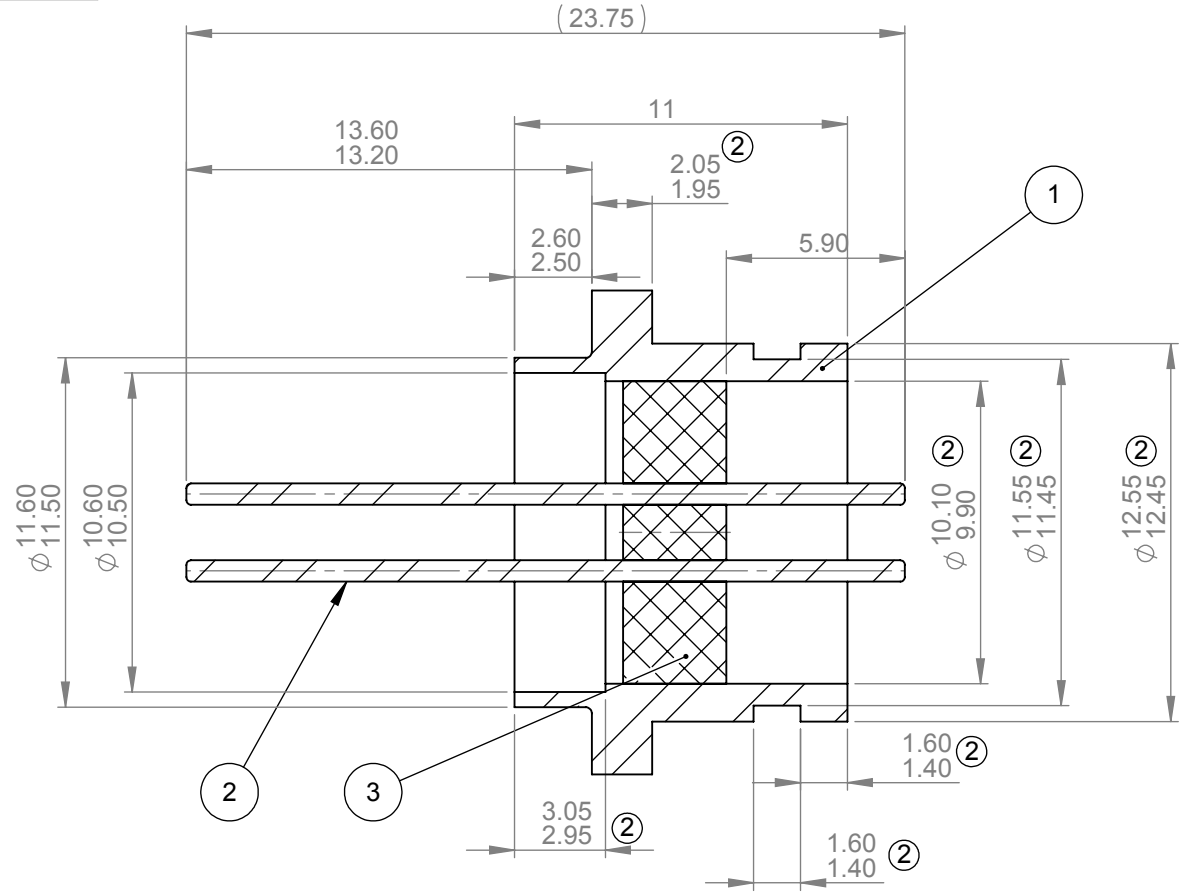
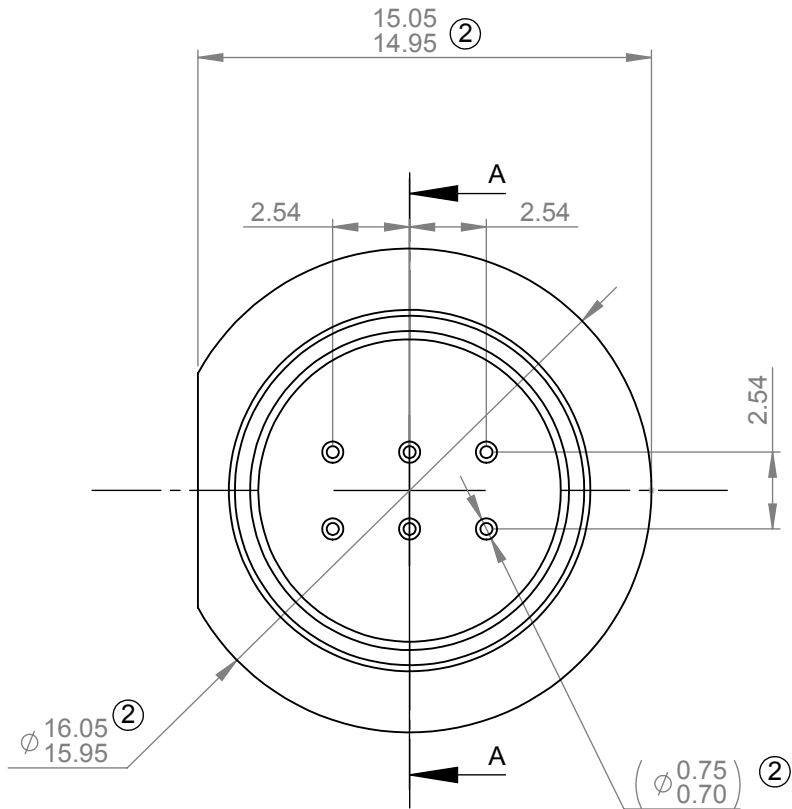


ITEM NO.	Dwg No	DESCRIPTION	MATERIAL	QTY.
1	SF3064D	FERRULE	Leaded Mild Steel	1
2	SP3064A	CONTACT PIN	Nilo 48-51	6
3	SE3064A	GLASS PREFORM	Glass Ceramic	1

REVISIONS			
REV.	REVISED BY	DATE	DCN NO
1	P ADAMS	05/09/2011	xxxx
2	P ADAMS	15/09/2011	xxxx



SECTION A-A

PLATING NOTES:  
 BODY & PINS: 4.0 - 7.0µm ELECTROLESS Ni UNDER 0.07µm NOM (0.25µm MAX) IMMERSION Au  
 APA: 1200mm<sup>2</sup>

DO NOT SCALE DRAWING



PROPRIETARY AND CONFIDENTIAL		UNLESS OTHERWISE SPECIFIED		FINISH: SEE NOTES	
THE INFORMATION CONTAINED IN THIS DRAWING IS THE SOLE PROPERTY OF <b>S.G.A TECHNOLOGIES LTD.</b> ANY REPRODUCTION IN PART OR AS A WHOLE WITHOUT WRITTEN PERMISSION OF <b>S.G.A TECHNOLOGIES LTD</b> IS PROHIBITED. ANY COPIES OF THIS DRAWING MADE BY ANY METHOD MUST INCLUDE A COPY OF THIS LEGEND AND THE <b>S.G.A</b> LOGO.		DIMENSIONS ARE IN MILLIMETERS TOLERANCES:- LINEAR: ± 0.1 ANGULAR: ± 0.5° SURFACE FINISH: 1.6			
		REMOVE ALL BURRS AND SHARP EDGES INTERNAL/EXTERNAL CHAMFER 0.1 x 45° MAX OR RADIUS R0.1 MAX		TITLE: <b>GAS METER SEAL</b> SIZE: <b>A4</b> DWG NO. <b>S3064D</b> Location: E:\seals\S3000-S3099\S3064D_2	
DRAWING STANDARD: THIS DRAWING COMPLIES TO BS EN ISO 1101:2005		DRAWN: P ADAMS 05/09/2011		WEIGHT: 5.28 g	
		APPV'D: 380 03/02/2012		SCALE: 4:1 SHEET 1 OF 1	