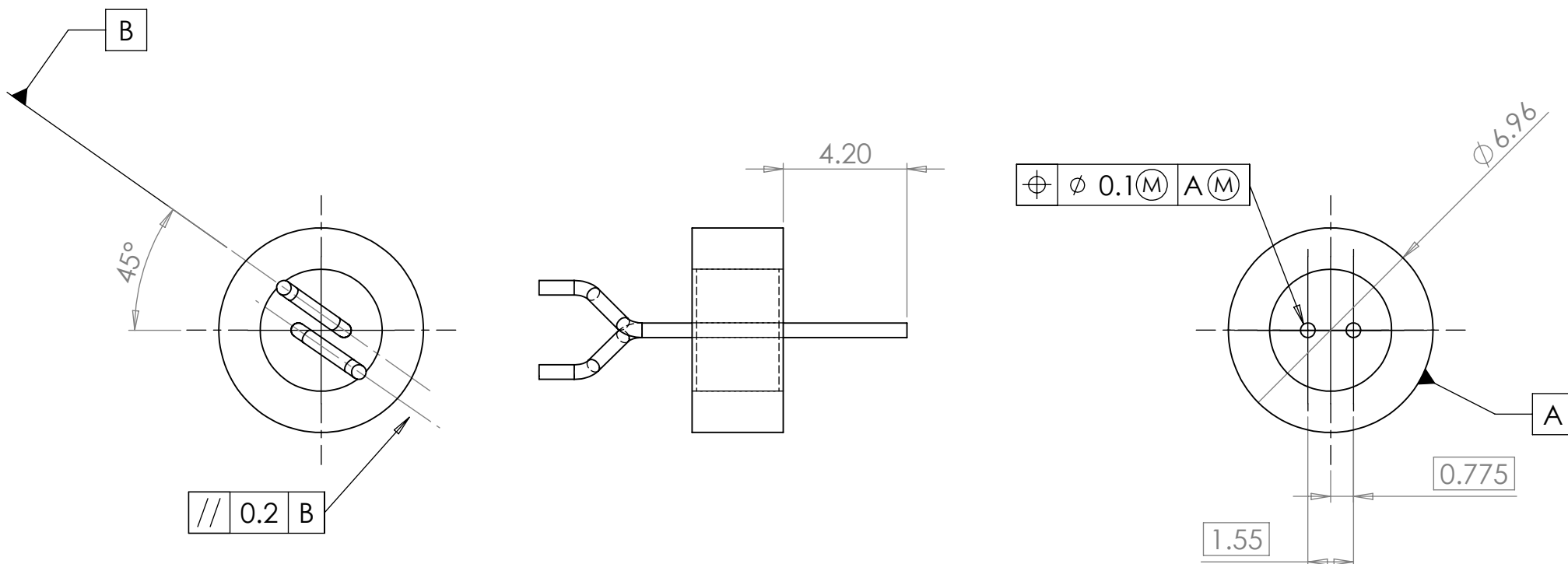


ITEM NO.	PART NUMBER	DESCRIPTION	MATERIAL	QTY.
1	SE3354A	GLASS PREFORM	SO5	1
2	SP3354A	PIN	Nilo 48	2
3	SF3354A	FERRULE	Stainless Steel	1

REVISIONS			
REV.	REVISED BY	DATE	DCN NO
1	E.HAWES	03/12/2013	506
2	J.BENNETT	08/01/2015	9048



MATERIAL: SEE BOM  
 PLATING FINISH:  
 PIN & BODY 3-6 MICRONS ELECTRO TIN (CULMO)  
 OVER 9-12 MICRONS COPPER

- NOTES:  
 1) ITEMS MUST NOT EXHIBIT BURRS, SWARF, SCRATCHES, DENTS, DRAW MARKS, DAMAGE OR ANY DELETERIOUS MATERIAL.  
 2) ITEMS MUST BE PACKED TO AVOID DAMAGE OR DETERIORATION IN TRANSPORT OR STORAGE

DO NOT SCALE DRAWING



enquiries@sgatech.co.uk

**PROPRIETARY AND CONFIDENTIAL**

THE INFORMATION CONTAINED IN THIS DRAWING IS THE SOLE PROPERTY OF **S.G.A TECHNOLOGIES LTD.**  
 ANY REPRODUCTION IN PART OR AS A WHOLE WITHOUT WRITTEN PERMISSION OF **S.G.A TECHNOLOGIES LTD** IS PROHIBITED.  
 ANY COPIES OF THIS DRAWING MADE BY ANY METHOD MUST INCLUDE A COPY OF THIS LEGEND AND THE **S.G.A** LOGO.

DRAWING STANDARD: THIS DRAWING COMPLIES TO BS EN ISO 1101:2005

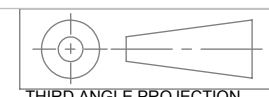
UNLESS OTHERWISE SPECIFIED

DIMENSIONS ARE IN MILLIMETERS  
 TOLERANCES:-  
 LINEAR:  $\pm 0.1$   
 ANGULAR:  $\pm 0.5^\circ$

SURFACE FINISH:  $\sqrt{1.6}$

REMOVE ALL BURRS AND SHARP EDGES  
 INTERNAL/EXTERNAL CHAMFER  $0.1 \times 45^\circ$  MAX  
 OR RADIUS R0.1 MAX

FINISH:

 THIRD ANGLE PROJECTION	
NAME	DATE
DRAWN J.BENNETT	08/01/2015
APPV'D XXX	XX/XX/XXX

TITLE: <b>GLASS TO METAL SEAL</b>	
SIZE: <b>A4</b>	DWG NO. <b>S3354</b>
Location: J:\seals\S3300-S3399\S3354_2	
WEIGHT: g	SCALE: 5:1
SHEET 1 OF 1	