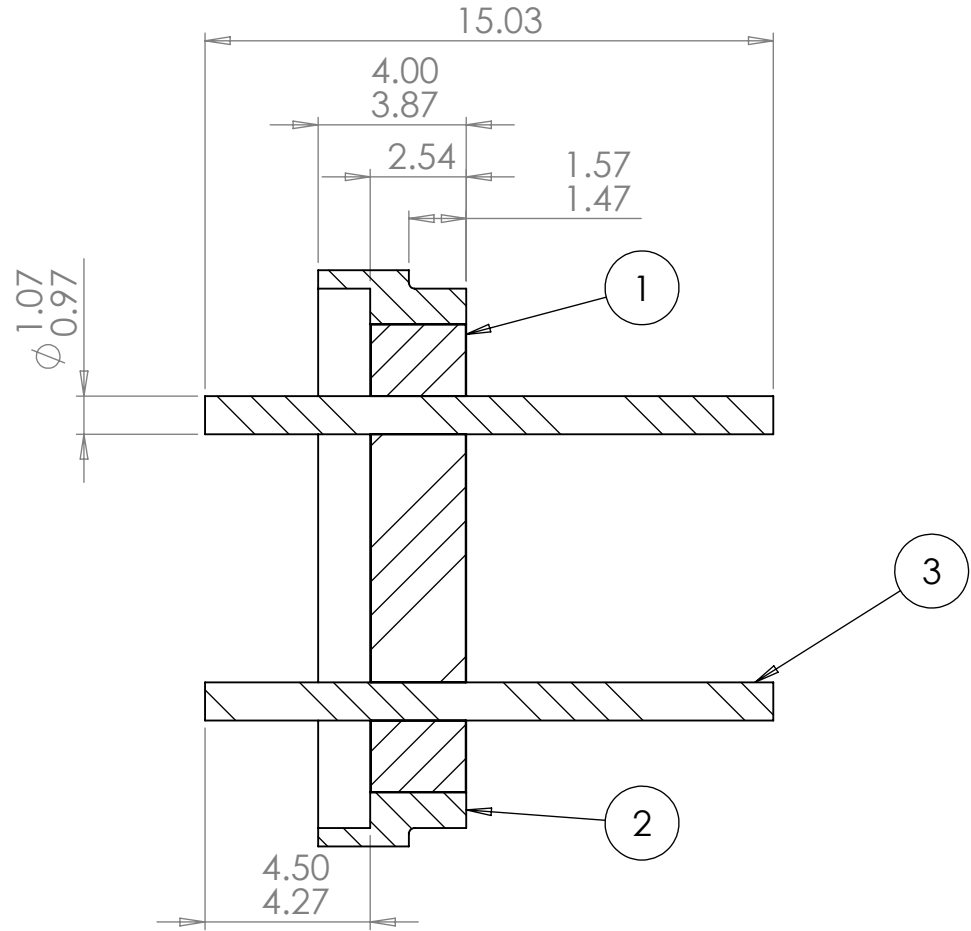
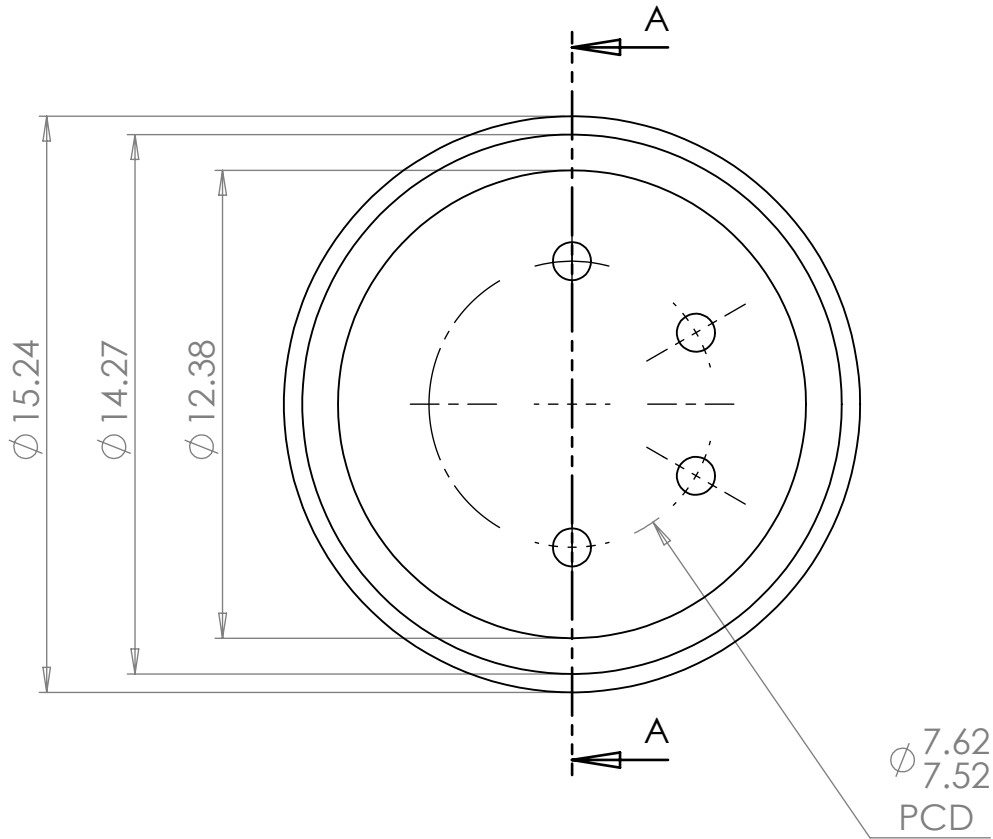


ITEM NO.	Dwg No	DESCRIPTION	MATERIAL	QTY.
1	SE3373	PREFORM	S05 Compression Glass	1
2	SF3304	FERRULE	MILD STEEL 230M07	1
3	SP3305	PIN	NILO 48	4

REVISIONS			
REV.	REVISED BY	DATE	DCN NO
1	L.BARNSELY	28/01/2014	521



SECTION A-A  
SCALE 5 : 1

DO NOT SCALE DRAWING



enquiries@sgatech.co.uk

MATERIAL: SEE BOM  
 PLATING: 4-7 $\mu$ M ELECTROLESS Ni UNDER 0.08 $\mu$  TYP  
 (0.25 $\mu$ M MAX) IMMERSION Au  
 MATERIAL CERTIFICATION REQUIRED

PROPRIETARY AND CONFIDENTIAL

UNLESS OTHERWISE SPECIFIED

FINISH: NATURAL

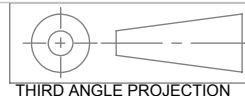
THE INFORMATION CONTAINED IN THIS DRAWING IS THE SOLE PROPERTY  
 OF **S.G.A TECHNOLOGIES LTD.**  
 ANY REPRODUCTION IN PART OR AS A WHOLE WITHOUT WRITTEN  
 PERMISSION OF **S.G.A TECHNOLOGIES LTD** IS PROHIBITED.  
 ANY COPIES OF THIS DRAWING MADE BY ANY METHOD MUST INCLUDE A  
 COPY OF THIS LEGEND AND THE **S.G.A** LOGO.

DIMENSIONS ARE IN MILLIMETERS  
TOLERANCES:-

LINEAR:  $\pm 0.1$   
 ANGULAR:  $\pm 0.5^\circ$

SURFACE FINISH: 1.6

REMOVE ALL BURRS AND SHARP EDGES  
 INTERNAL/EXTERNAL CHAMFER 0.1 x 45° MAX  
 OR RADIUS R0.1 MAX



NAME	DATE
DRAWN L.BARNSELY	28/01/2014
APPV'D 521	28/01/2014

TITLE: ASSEMBLY	
SIZE: A4	DWG NO. S3373
Location: J:\seals\S3300-S3399\S3373_1	
WEIGHT: 2.90 g	SCALE: 2:1
SHEET 1 OF 1	

DRAWING STANDARD: THIS DRAWING COMPLIES TO BS EN ISO 1101:2005