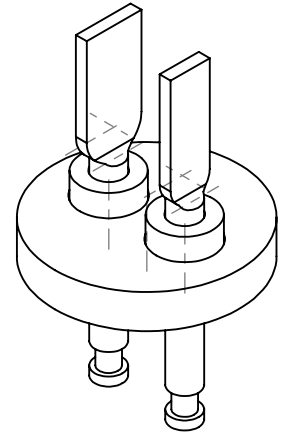
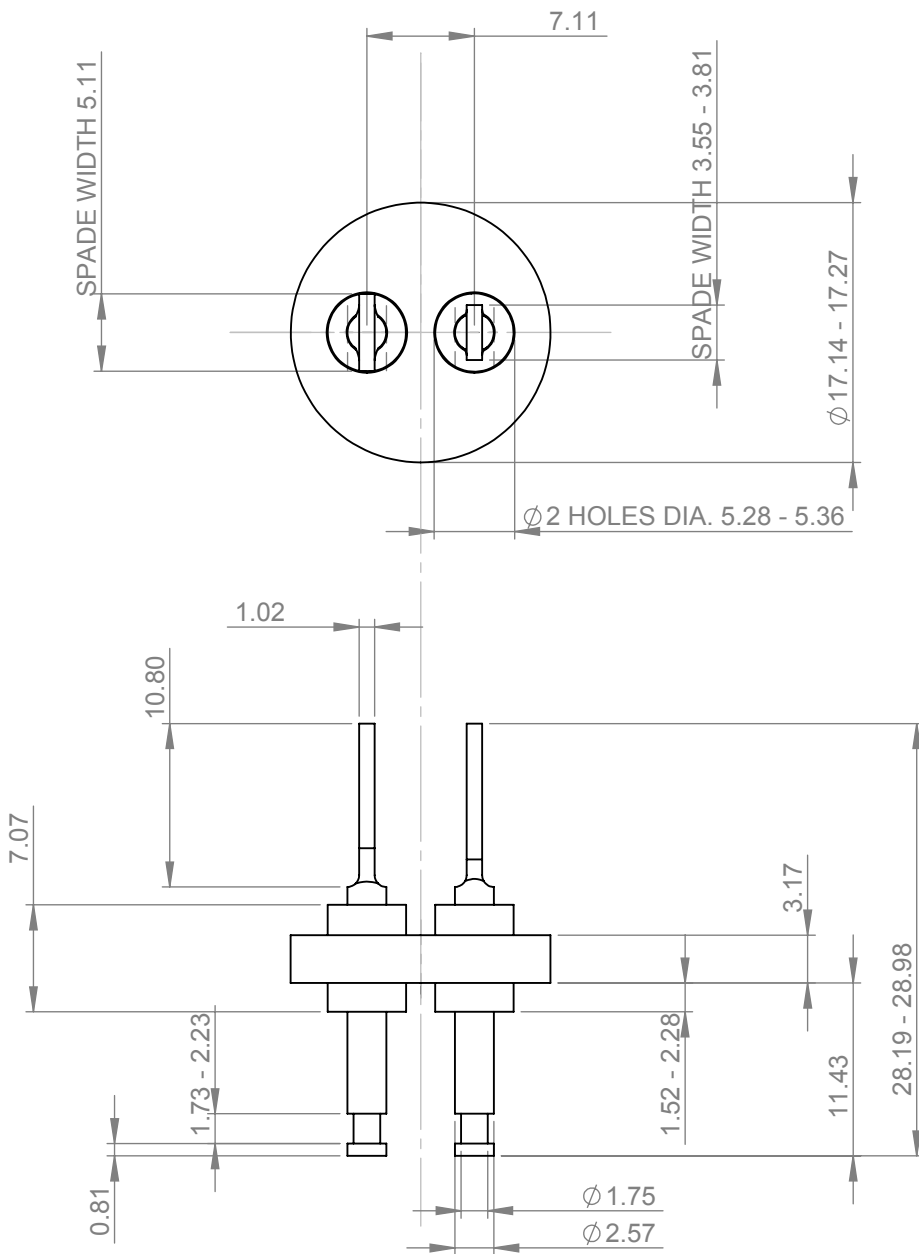


REVISIONS			
REV.	REVISED BY	DATE	DCN NO
1	D.MORRIS	18/09/2015	9217




ITEM NO.	PART NUMBER	DESCRIPTION	QTY.
1	SF0118	FERRULE - KOVAR	1
2	SE0118	PREFORM - GLASS	2
3	SP0118B	PINS - KOVAR	1
4	SP0118A	PINS - KOVAR	1

TRANSFERRED TO CAD 28/08/2015
MATERIAL: SEE BOM
STANDARD/TYPE: N/A
MATERIAL CERTIFICATION REQUIRED

NOTES

- ITEMS MUST NOT EXHIBIT BURRS, SWARF, SCRATCHES, DENTS, DRAW MARKS, DAMAGE OR ANY DELETERIOUS MATERIALS
- ITEMS MUST BE PACKED TO AVOID DAMAGE OR DETERIORATION IN TRANSPORT OR STORAGE

PROPRIETARY AND CONFIDENTIAL		UNLESS OTHERWISE SPECIFIED	DO NOT SCALE DRAWING	
<p>THE INFORMATION CONTAINED IN THIS DRAWING IS THE SOLE PROPERTY OF S.G.A TECHNOLOGIES LTD.</p> <p>ANY REPRODUCTION IN PART OR AS A WHOLE WITHOUT WRITTEN PERMISSION OF S.G.A TECHNOLOGIES LTD IS PROHIBITED.</p> <p>ANY COPIES OF THIS DRAWING MADE BY ANY METHOD MUST INCLUDE A COPY OF THIS LEGEND AND THE S.G.A LOGO.</p>		<p>DIMENSIONS ARE IN MILLIMETERS</p> <p>TOLERANCES:</p> <p>LINEAR: ± 0.13</p> <p>ANGULAR: $\pm 0.5^\circ$</p> <p>SURFACE FINISH: $1.6/\sqrt{\quad}$</p> <p>REMOVE ALL BURRS AND SHARP EDGES</p> <p>INTERNAL/EXTERNAL CHAMFER $0.1 \times 45^\circ$ MAX OR RADIUS $R0.1$ MAX</p>	 <p>enquiries@sgatech.co.uk</p>	
DRAWING STANDARD		FINISH: SEE NOTES	SIZE	DWG NO.
THIS DRAWING COMPLIES TO BS EN ISO 1101:2005		NAME	A4	W1874
THIRD ANGLE PROJECTION		DATE	Location: Z:\seals\s1800-s1899\W1874_1	
DRAWN		D.Morris	WEIGHT: 1.08 g	
APPV'D		9217	SCALE: 2:1	
18/09/2015		SHEET 1 OF 1		