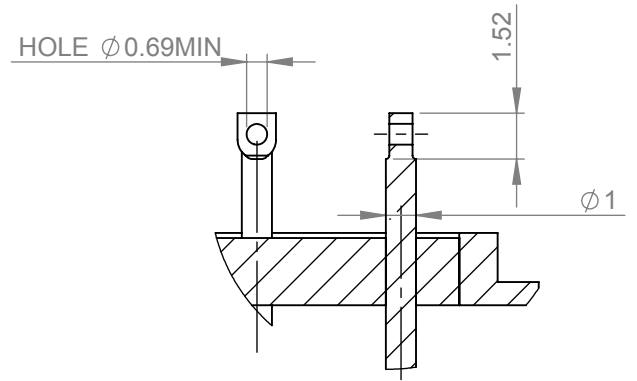
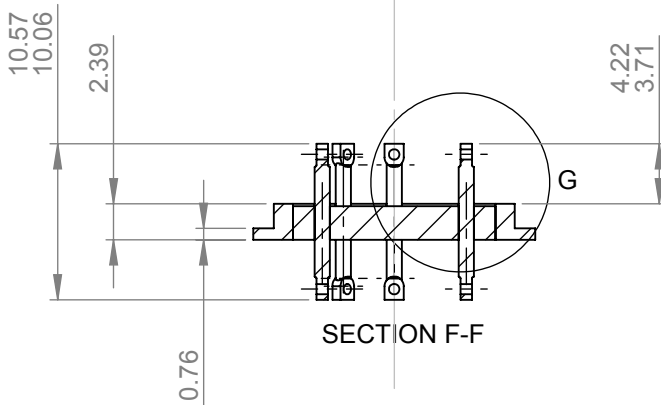
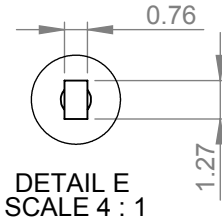
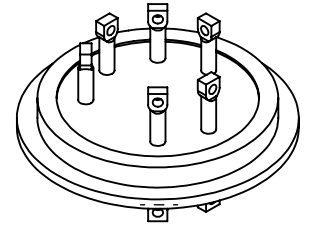
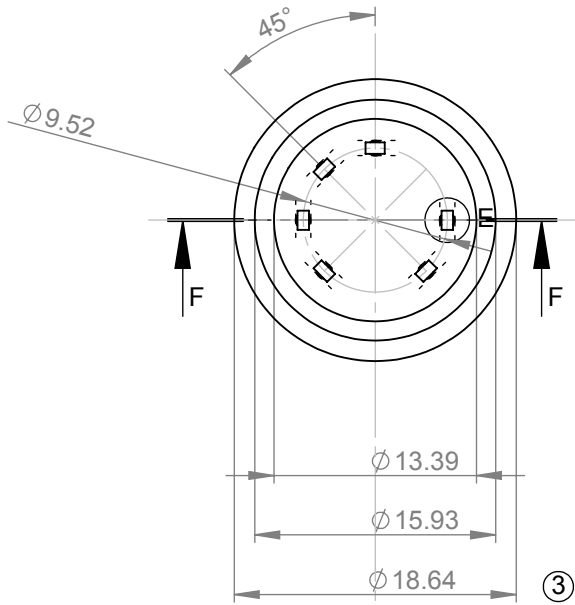


ITEM NO.	PART NUMBER	DESCRIPTION	QTY.
1	SE1925	Preform - Glass	1
2	SF1925	Ferrule - Mild Steel	1
3	SP1925	Pins - 48/51% Nickel Iron	6

REVISIONS			
REV.	REVISED BY	DATE	DCN NO
1	D.MORRIS	18/09/2015	9217
2	D.MORRIS	26/02/2018	9712
3	D.MORRIS	23/12/2019	10256




**FINISH**  
 2.5-5.0µm OF Cu UNDER 5-10µm OF Sn ②  
 APA:534mm<sup>2</sup>

TRANSFERRED TO CAD 18/09/2015

MATERIAL: SEE BOM  
 STANDARD/TYPE: N/A  
 MATERIAL CERTIFICATION REQUIRED

**NOTES**

- 1) ITEMS MUST NOT EXHIBIT BURRS, SWARF, SCRATCHES, DENTS, DRAW MARKS, DAMAGE OR ANY DELETERIOUS MATERIALS
- 2) ITEMS MUST BE PACKED TO AVOID DAMAGE OR DETERIORATION IN TRANSPORT OR STORAGE

PROPRIETARY AND CONFIDENTIAL		UNLESS OTHERWISE SPECIFIED	DO NOT SCALE DRAWING	
THE INFORMATION CONTAINED IN THIS DRAWING IS THE SOLE PROPERTY OF <b>S.G.A TECHNOLOGIES LTD.</b> ANY REPRODUCTION IN PART OR AS A WHOLE WITHOUT WRITTEN PERMISSION OF <b>S.G.A TECHNOLOGIES LTD</b> IS PROHIBITED. ANY COPIES OF THIS DRAWING MADE BY ANY METHOD MUST INCLUDE A COPY OF THIS LEGEND AND THE <b>S.G.A</b> LOGO.		DIMENSIONS ARE IN MILLIMETERS TOLERANCES: LINEAR: ±0.3 ANGULAR: ±0.5° SURFACE FINISH: 1.6 ✓		
DRAWING STANDARD		FINISH: SEE NOTES		
THIRD ANGLE PROJECTION THIS DRAWING COMPLIES TO BS EN ISO 1101:2005		REMOVE ALL BURRS AND SHARP EDGES INTERNAL/EXTERNAL CHAMFER 0.1 x 45° MAX OR RADIUS R0.1 MAX	<b>6 Pin Seal Drawing</b>	
		NAME: DATE:	SIZE: <b>A4</b> DWG NO.: <b>W1925</b>	
		DRAWN: D.MORRIS 01/09/2015 APPV'D: 9217 18/09/2015	Location: Z:\seals\s1900-s1999\W1925_3 WEIGHT: 0.55 g SCALE: 2:1 SHEET 1 OF 1	