

PLESSEY CO. (TITCH)

18/4/06529

HOUSING - 1612037

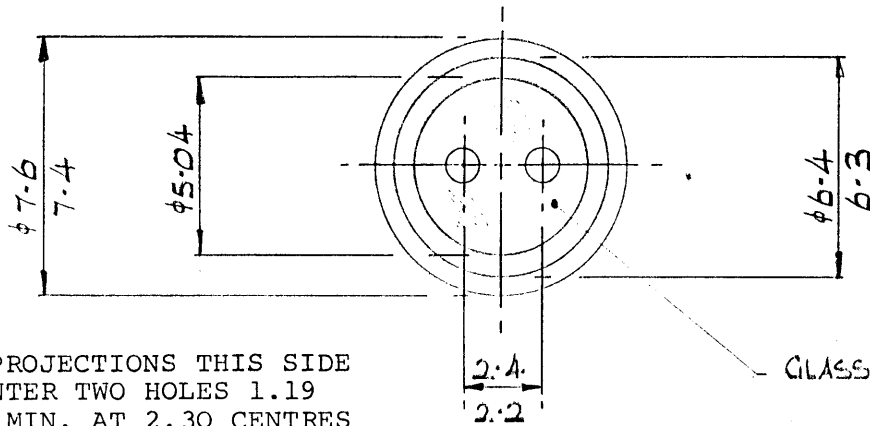
PINS - 1612073 (CRANKED)

BEADS - 1900A15/L (20/0)

A.Q.L. ALL DIM'S 1% INSP LEVEL 5.3. (2000/SH/00029)

FOR SHEET 2 OF 2 SEE PROCESSING SCHEDULE.

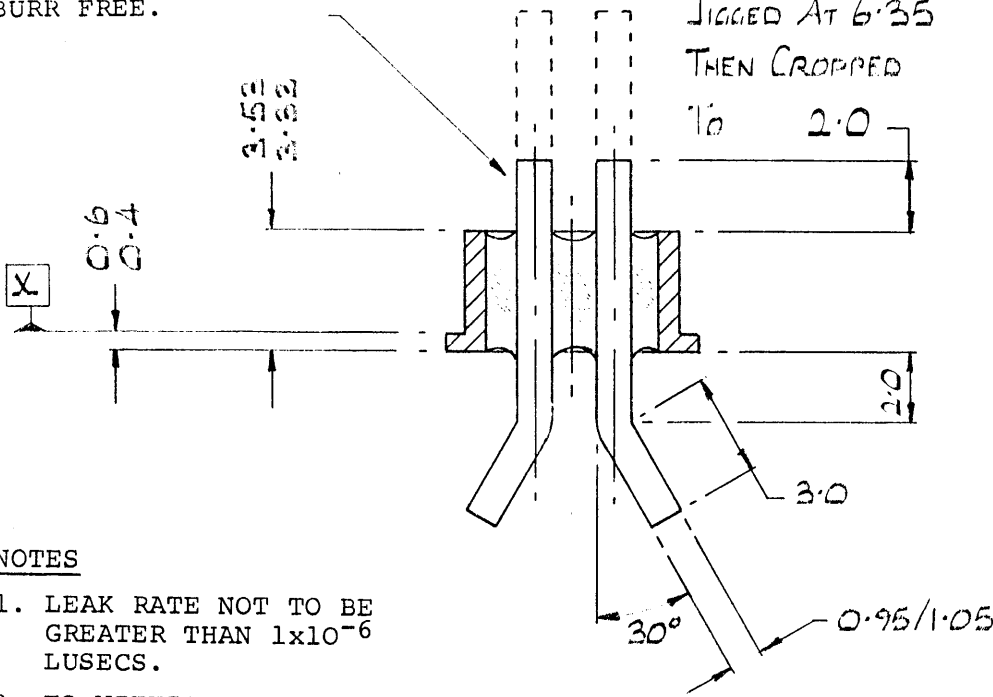
W02082/1



PIN PROJECTIONS THIS SIDE TO ENTER TWO HOLES 1.19 DIA. MIN. AT 2.30 CENTRES WHEN MOUNTED ON FLANGE FACE X. BOTH ENDS ON PINS TO BE BURR FREE.

GLASS TO BE SMOOTH

JIGGED AT 6.35 THEN CROPPED TO 2.0



NOTES

1. LEAK RATE NOT TO BE GREATER THAN 1×10^{-6} LUSECS.
2. TO WITHSTAND A VOLTAGE PROOF REQUIREMENT OF 1000 V. R.M.S.

25-10-72	2	REDRAWN	FD			
	1	ORIGINAL				
THIRD ANGLE PROJECTION		DATE	ISSUE	REVISION	DR'N	APP

MATERIAL	MILD STEEL	TOLERANCES UNLESS OTHERWISE STATED DIMENSIONS ± 0.2 ANGULAR $\pm 10^\circ$ CONCENTRICITY OF ALL DIAMETERS 0.25 T.I.R. ALL SHARP EDGES TO BE BROKEN SMOOTHLY MACHINE FINISH — ALL DIMENSIONS IN M.M.	DRAWN	FD
GLASS	NIL0500R51		DATE	25-10-72
FINISH	ELECTRO TIN PLATE		CHK'D	

WESLEY COE (CAMBRIDGE) LTD.

TITLE	TWIN PIN CRANKED	PART No	SHEET 1 of 2 1613041	ISSUE	2
-------	------------------	---------	-------------------------	-------	---

IF IN DOUBT ASK

DO NOT SCALE THIS DRAWING